

# CAMPS FOR KIDS



## 2017 ANNUAL REPORT

**IMPACT**  
GIVING YOUTH A  
SUMMER TO REMEMBER

CAMPS  
FOR KIDS  
SHARING THE WONDERS OF CAMP.



## OUR NETWORK

### AILEYCAMP

By the KC Friends of Alvin Ailey, performing arts program, ages 11-14. Kansas City, MO.

### CAMP CAROUSEL AND CAMP ERIN

For children suffering from a loss. Parkville, MO.

### CAMP ENCOURAGE

For children with autism spectrum disorders. Linwood, KS.

### CAMP CHIMER

For children with chronic kidney disease. Excelsior Springs, MO

### CAMP HOPE

For children living with or have survived cancer. Great Bend, KS.

### CAMP MITIÖG

For children born with Spina Bifida. Excelsior Springs, MO.

### CAMP OASIS

For children with Crohn's disease or ulcerative colitis. Potosi, MO.

### CAMP PLANET D

For children with Type 1 Diabetes. Linwood, KS.

### CAMP QUALITY

For children living with or who have survived cancer. Excelsior Springs, MO.

### CAMP SEEK

Exposes under-served students of color to STEM engineering education. Kansas City, MO

### CAMP SYSTOLE-CHD FAMILIES

For children living with congenital heart disease. Lawson, MO.

### CAMP WIN A SPORTS DAY-CAMP

For girls ages 6-12. Kansas City, MO.

### HEARTLAND THERAPEUTIC RIDING CAMP

For children with disabilities and also more typically developed peers. Bucyrus, KS.

### KINGDOM KIDS CAMP

For neglected and abused children who are now in foster care. Excelsior Springs, MO.

### JOSHUA CENTER CAMP

For kids diagnosed with autism spectrum disorder, Tourette's Syndrome or OCD/ADHD. Lee's Summit, MO.

### MATTIE RHODES ART CAMP

For children with special emphasis on providing services to low-income and minority children. Kansas City, MO.

### MIDWEST CHILDREN'S BURN CAMP

For children with burn injuries. Rocky Mount, MO.

### ROYAL FAMILY KIDS CAMP

For kids in foster care. Linwood, KS.

### WHATSOEVER COMMUNITY CENTER

Provides underserved youth opportunities for academic enrichment and social development. Kansas City, MO.

### WILDWOOD OUTDOOR EDUCATION CENTER

Provides all Kansas City youth an experiential outdoor education program. LaCygne, KS.

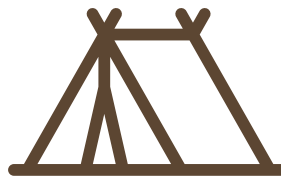
### WONDERLAND CAMP

For children and teenagers with developmental disabilities. Rocky Mount, MO.

# OUR MISSION

Camps For Kids works to assure that no Kansas City area child will be turned away from summer camp because of low income, or physical or developmental disabilities.

21



CAMPS IN THE NETWORK

3,520



CHILDREN DISCOVERED THE WONDERS OF CAMP

## SUPPORT FOR CAMPS FOR KIDS

More kids discovered the wonders of camp because of you.

### \$25,000 - \$75,000

Hall Family Foundation  
Sarli Family Foundation  
Ewing Marion Kauffman Foundation  
Matching Gifts Program

### \$10,000 - \$24,999

W. J Brace Charitable Trust  
Oppenstein Brothers Foundation  
Menorah Legacy Foundation

### \$5,000 - \$9,999

Henry E. Wurst Family  
H&R Block Foundation  
Kansas Gas Service  
Sosland Foundation  
Vivian & Hymie J. Sosland  
Charitable Trust

### \$1,000 - \$4,999

Victor and Helen Regnier  
Sunflower Foundation  
DSimone Pearson, LL  
Tower Tavern  
Peter and Carol Powell  
Hannah Orthodontics  
Stacey Deere  
Proventus Consulting LLC

Kim and Ted Higgins Family  
Charitable Fund  
Copaken Family Foundation  
Peter Powell Family Foundation  
Brad and Deon Pearson  
Bill and Dianne Ryan  
Celtina Reinert  
Romanelli Dental  
RTS Administrative Service, Inc.  
Shook Hardy & Bacon LLP  
BlueScope Foundation

### \$500 - \$999

Thomas S. Watson Family Foundation  
Irene Bettinger  
EPR Properties  
Polsinelli  
Heartland Combined Federal Campaign  
Jewish Community Foundation  
Brad and Jill Hanna Foundation  
Frank Newcomer III  
George and Wendy Powell  
Brian Bruckert  
Peter and Margot Mestad  
Bank Of Oklahoma  
Kenneth and Margaret Conrow

### \$100 - \$499

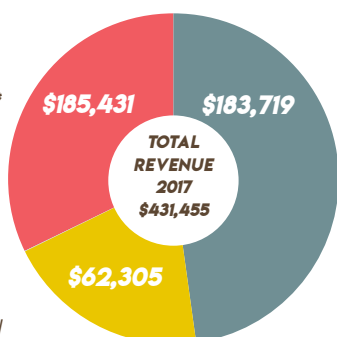
Mack Tillton Charity Fund  
Walter Cofer and Nicola Heskett

Staci Cooper  
Mary Jane Harmless  
Catherine Parrack  
Gabe and Megan Egli  
David and Renee Senter  
Laurie Santee  
Nicole Pauls-DeSimone  
Theresa and Donald Olson  
Mary Olson and Arron Connet  
Michelle and Kurt Lamb  
William Smith  
Susan Melton  
Jewett Ferguson  
Jennie Storm  
Kathryn Karash  
Ellen Myers  
Steven and Nan Streen  
Marie and Randy Spector  
Dana Mehrer  
Brett and Megan Trimble  
Ann and David Desimone  
Christopher McQueen  
David and Kristi Kingston  
Love Consulting LLC  
Terrence Edelman  
Dick and Mary Woods  
Evan Luskin  
Darryl and Jennifer Mattox

# FINANCIALS\*

## INCOME

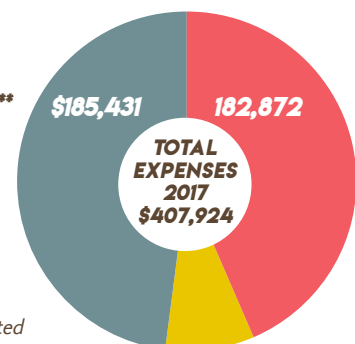
- **CAMP DESIGNATED DONATIONS\*\***
- **UNRESTRICTED GIFTS**
- **MATCH POOL GIFTS**



*\*This information represents the unaudited figures for the year ending December 31, 2017. Current information is available at [www.campsforkids.org](http://www.campsforkids.org) or by emailing [executivedirector@campsforkids.com](mailto:executivedirector@campsforkids.com)*

## EXPENSES

- **CAMP DESIGNATED DONATIONS\*\***
- **MATCH FUND PROGRAM**
- **FUNDRAISING & ADMINISTRATION**



*\*\*As agents for our camps, camp-designated donations are not recognized as a Camps For Kids revenue or expense.*

**66%**



**NEEDED FINANCIAL ASSISTANCE**

**54%**



**HAD A MEDICAL NEED  
(SOME CHILDREN ARE COUNTED IN BOTH OF THESE CATEGORIES)**

**ZERO**

**KIDS WERE TURNED AWAY FROM CAMP**

### CAMP DESIGNATED MATCH DONORS \$1,000 AND ABOVE

Siobhan McLaughlin  
Ewing Marion Kauffman Foundation Matching Gifts Program  
David Pierson  
Norman and Barbara Bernauer  
Tracy and Sarah Johnson  
Christopher and Kelli Carlson  
Robert and Alice Bixby  
Brian O'Connor and Amanda Brooke  
Jon and Kelsie Erskine  
GRAM  
Wardrip Landscaping, Inc.  
Stephanie Reid  
S.A.V.E  
Lockton Companies, LLC  
Cuivre River Electric Community Trust  
Lisa Klein  
Sunset Optimist Club of Blue Springs  
Edward Jones  
Benjamin and Laura Huyett  
David Ford  
Delaina Melton  
Community of Christ - Kansas City

Roberts-Robinson Chevrolet Buick GMC, Inc  
Susan Decoursey  
Allen and Sheila Laughlin  
Kevin Moriarty and Barbara Allen  
Marcia and Stephen Bailey  
Mission Road Community Of  
St. Lukes Health Systems  
Karren Crouch  
Best Bar Interiors LLC  
Mildred's Coffeehouse  
Patricia Konopka  
The Precision Divisions, Inc.  
Topeka Chapter Links, Inc.  
Sporting Kansas City  
Esmond Alleyne  
Hannibal Jaycees  
Central States Telecom, Inc.  
Michael Messner and Leslie Heusted  
Anne Johnson  
Turner Dental Group  
Salina Guns and Hoses  
Sandra Konovalske  
Lafayette County Cancer Coalition  
Joseph Hoeflerlin and Donna Pavlick



Leo Watson  
Stanley and Nancy Woodworth  
Leslie Fleuranges  
Barbara Foster  
Jerry Williams  
Atterbury Family Foundation  
Charles Orth and Beth Rosemergy  
Richards Auto Salon, Inc.  
Loretta Britton  
FJC Foundation

SMWW LLC  
Crohn's & Colitis Fdn  
Matthew and Judith Flynn  
Clean Uniform Company  
Aaron North  
Sikeston Jaycee Bootheel Rodeo, Assoc.  
Aimee Gorrow  
Beth Rosemergy  
BlueScope Foundation  
Advanced Sports and Family  
Chiropractic & Acupuncture

## LEADERSHIP

### 2017 BOARD OF DIRECTORS & OFFICERS

**BRAD I. PEARSON**

President  
DeSimone Pearson, LC

**STACEY DEERE**

First Vice President  
Shook, Hardy & Bacon, LLP

**STEVEN J. STREEN**

Second Vice President  
Attorney at Law PC

**CHRISTOPHER MCQUEEN**

Treasurer  
TPP Certified Public Accountants

**DIANNE RYAN**

Secretary  
Community volunteer

## MEMBERS AT LARGE

**SPENCER DEAN**

Spring Venture Group

**AMY LUCAS**

US Gypsum

**DARRYL MATTOX**

Gragg Advertising

**DANA MEHRER**

Community Volunteer

**SUSAN MELTON**

Saint Luke's Foundation

**PETER E. POWELL**

PHR Holdings, LLC

**CELTINA REINERT**

Queen's Price Chopper

**DAVID SENTER, DVM, DACVD**

Veterinary Allergy and Dermatology Clinic, LLC

**RANDY SPECTOR**

Kansas Gas Service

**BURTON TAYLOR**

Proventus

**DOUG WRIGHT, PHD.**

University of Kansas Medical Center



# HELP US CONTINUE TO GROW

- Consider making a gift to send a child to camp
- Tell 3 people about Camps For Kids this year
- Follow Camps For Kids on Facebook and Twitter



## LOOK FOR NEWS ON UPCOMING EVENTS

[campsforkids.org](http://campsforkids.org)

[executivedirector@campsforkids.com](mailto:executivedirector@campsforkids.com)

[facebook.com/campsforkids](https://facebook.com/campsforkids)

Twitter handle : @Campsforkids

# CAMPS FOR KIDS

SHARING THE WONDERS OF CAMP.

5960 DEARBORN, SUITE 225

MISSION, KS 66202

816.839.6494